

What the Homeowner Wanted

Storm damage in the kitchen ceiling prompted the homeowner to contact a contractor to handle the repairs. At the same time, the homeowner decided to open up the kitchen so she could have a larger space for a table and chairs for entertaining while retaining the character of her historic home.

What Was Done

The original kitchen was only 180 square feet in size with an adjoining breakfast nook and a small combined laundry room/pantry/storage closet. The new design included removing the interior walls of the breakfast nook and laundry room to create a combined area of 284 square feet.

The new eat-in kitchen includes:

- custom cabinetry with 42” high uppers and featured glass doors flanking the vent hood
- custom built island with 6 drawers, extra counter space, and seating for three
- a built-in wine rack beside the refrigerator
- granite countertops
- stainless steel appliances
- updated lighting scheme

To accomplish the larger kitchen:

- The wall between the kitchen and breakfast nook was removed
- The walls of the combined storage/pantry/laundry room were removed
- Custom solid wood cabinetry was built to utilize the expanded area



After

- The peninsula, built-in hutch and built-in desk were eliminated
- The soffit was removed in the kitchen to match the ceiling height between the entry way, the breakfast nook, and the laundry room



Before



After

The new kitchen provides a large area for multiple cooks as well as plenty of space for social gatherings around the new island.



The kitchen used to be a small confined area that didn't allow much room for more than 1 person to work. The ceiling height and small room sizes created a dark and enclosed feeling.

Before

Improved Kitchen Functionality

There is seating for more people around the new island and room for a larger table and chairs in the new eat-in kitchen design.

Natural light now flows into the entire kitchen from existing skylights, windows, and the French door which became an entrance into the kitchen rather than just leading into the small breakfast nook.

The client has stopped using the front door as the main entrance to the house and instead uses the more convenient French door since it is closer to the car and easier to unload groceries and supplies directly into the kitchen.

The counter and cabinet space in the kitchen was greatly increased and the new design presents an area where multiple people can comfortably work and socialize at the same time.

The original lighting consisted of one ceiling fixture and old track lighting. The new lighting design includes 9 recessed lights, a pendant over the island, updated track lighting, and festoon lights under the cabinets.

The washer and dryer remained in the same configuration but they are now hidden behind a bi-fold door customized to match the cabinet fronts. Since the laundry area is used rather infrequently, the client was happy to give the additional space to the kitchen.

The pantry and storage closet became an integral part of the kitchen, no longer in a separate room.

Aside from the modern appliances, the new kitchen looks as if it could have been found in the house when it was originally built in the 1930's,

The architectural detail of the vaulted ceiling is now accentuated.



After



The ceiling fan was removed and a pendant light was installed in its place. The soffit was removed to make room for the custom 42 inch upper cabinets.

Before

Improved Kitchen Appearance

The design of the updated kitchen is in keeping with the historical 1939 Tudor style home.

Modern appliances blend with the custom cabinets to create a new space that looks as if it could have been part of the original house.

The coved ceiling detail found in the rest of the house was recreated in the remodeled areas for a cohesive finish.

The original small rooms and uneven ceiling lines created a dark and closed-in feeling where the natural light was suppressed. Now the existing skylight, windows, and doors become more of a focal point and work together to brighten the entire area – an added bonus the client didn't expect.

The cabinets are painted the same shade of white as the ceiling, doors and casings and the island and kitchen walls are painted a soft green. The granite countertop has flecks of gold, black, beige, and gray and the subtle moss colored background is drawn to attention from the coordinating wall color. The light beige porcelain floor tile flows throughout the entire space and blends well with the beige, copper and olive tiles comprising the mural backsplash above the stove.

The new farm house sink with front apron and bronzed country faucet kept the old-fashioned look the home-owner wanted to preserve.

The new lights tend to disappear during the day but allow many options for illuminating all the different areas of the expanded kitchen.

The old ceiling fan was removed from the center of the room and replaced with a rubbed bronze oscillating table top fan mounted to the pitched wall above the stove (not pictured). This nostalgic option provides the needed airflow in the kitchen without detracting from the architecture of the ceiling. Instead it complements the room's new style.

The main field of the floor is set diagonally with 16x16 porcelain tiles. A border of the same tile was laid out to follow the outline of the wall using 6 inch cut pieces to produce a subtle but interesting effect.



After

The washer and dryer are now housed behind a bi-fold door retrofitted to match the custom cabinets.



The farm house sink and country faucet kept the old-fashioned look the homeowner wanted to preserve.

The flooring blends with the rest of the room and helps to lighten the entire area.

The crown molding and the arched bridge over the window add an interesting level of detail and helps keep the scale of the room in perspective.

Before

Excellence in Craftsmanship

All the cabinets were custom built and include pull-out shelves, self-closing drawers, feature glass doors, a wine rack, crown molding, and built-in microwave and curio shelves.

Careful attention to the period detail is evidenced in the continuation of the coved ceiling.

The custom island was built to resemble a piece of furniture with large drawers and raised off the floor on sturdy legs. The paint color is slightly darker than the wall color which draws attention to the subtle detail of the wainscoting.

A custom backsplash mural above the stove includes a blend of 1x1 glass tile in greens, browns and beige which borders the aged copper clover metal tile that forms the center of the design. Framing the entire piece is an olive colored railing tile which pulls the entire collection together and coordinates it with the countertop and the wall color.

Plaster was used for the ceiling coving and required hours of careful sculpting and sanding to have the walls meet the new ceiling in the same shape and style as the rest of the house.



After

The French door is now a light source for the entire kitchen area where before it was cut off by the breakfast nook walls. The dining table is now an integral part of the kitchen instead of being tucked behind a wall. The kitchen is now the hub of the house and perfect for entertaining multiple guests.

The old laundry room wall and peninsula were removed and the ceiling was modified to flow seamlessly between all the remodeled areas.



Before

Obstacles

The wall between the kitchen and breakfast nook was a weight bearing wall, so a glue-lam beam was used as a header to allow for the wall removal.

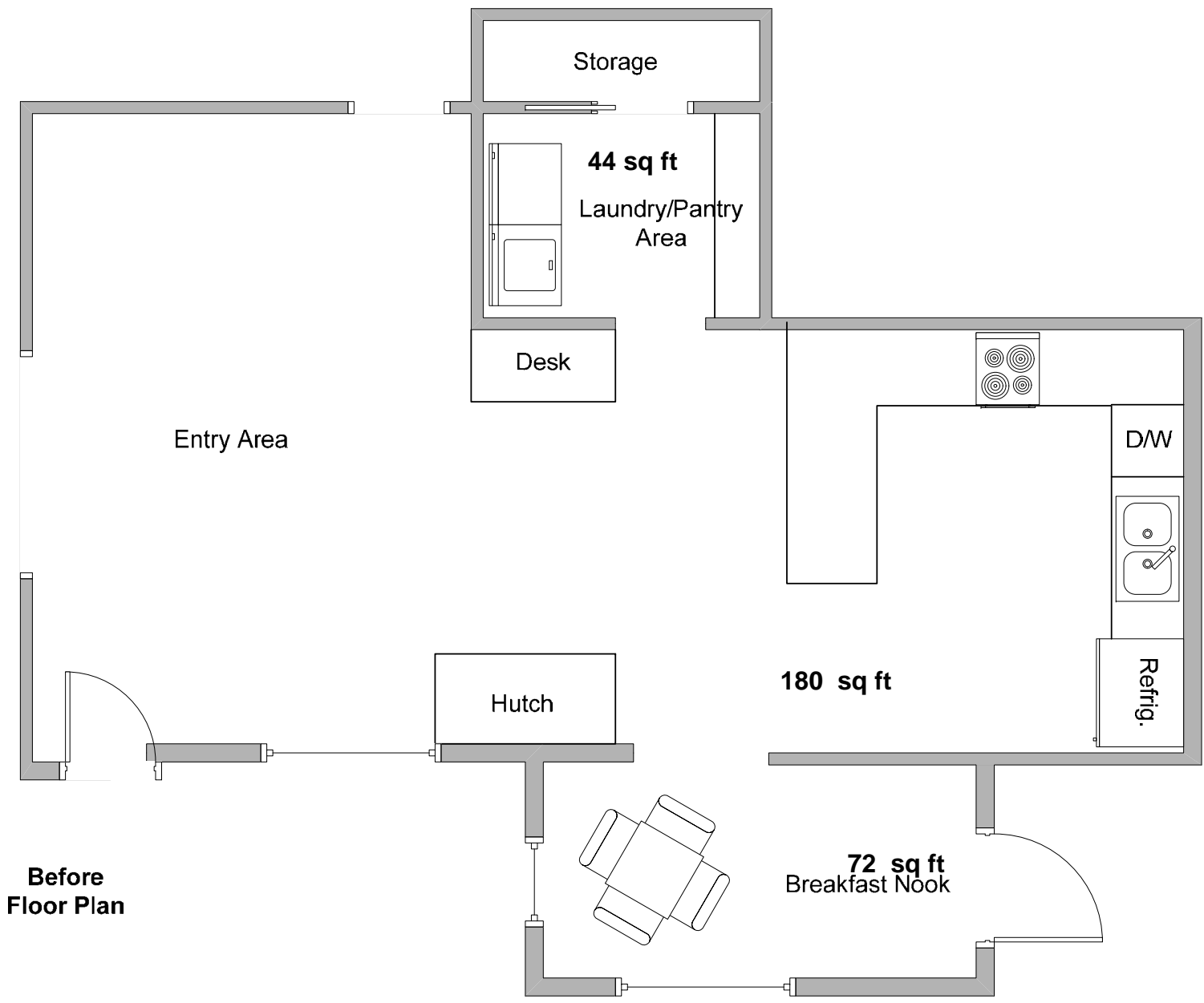
During the project, it was discovered that the ceiling in the entry way, the trusses above the soffit area, and the ceiling in the breakfast nook were all at different heights. The 3 different areas had to be adjusted to give the appearance of a uniform ceiling height. At the same time, the coving between the ceiling and wall was maintained and carried into the remodeled areas.

After the wall was removed between the breakfast nook and the kitchen area, it was discovered that the remaining wall behind the built-in hutch was built entirely of brick covered with a thin layer of plaster – no framing and no drywall had been used. The exposed portion of the brick wall now needed to become an outside corner. This was accomplished by adding many coats of plaster until the two walls blended together to become the new corner.

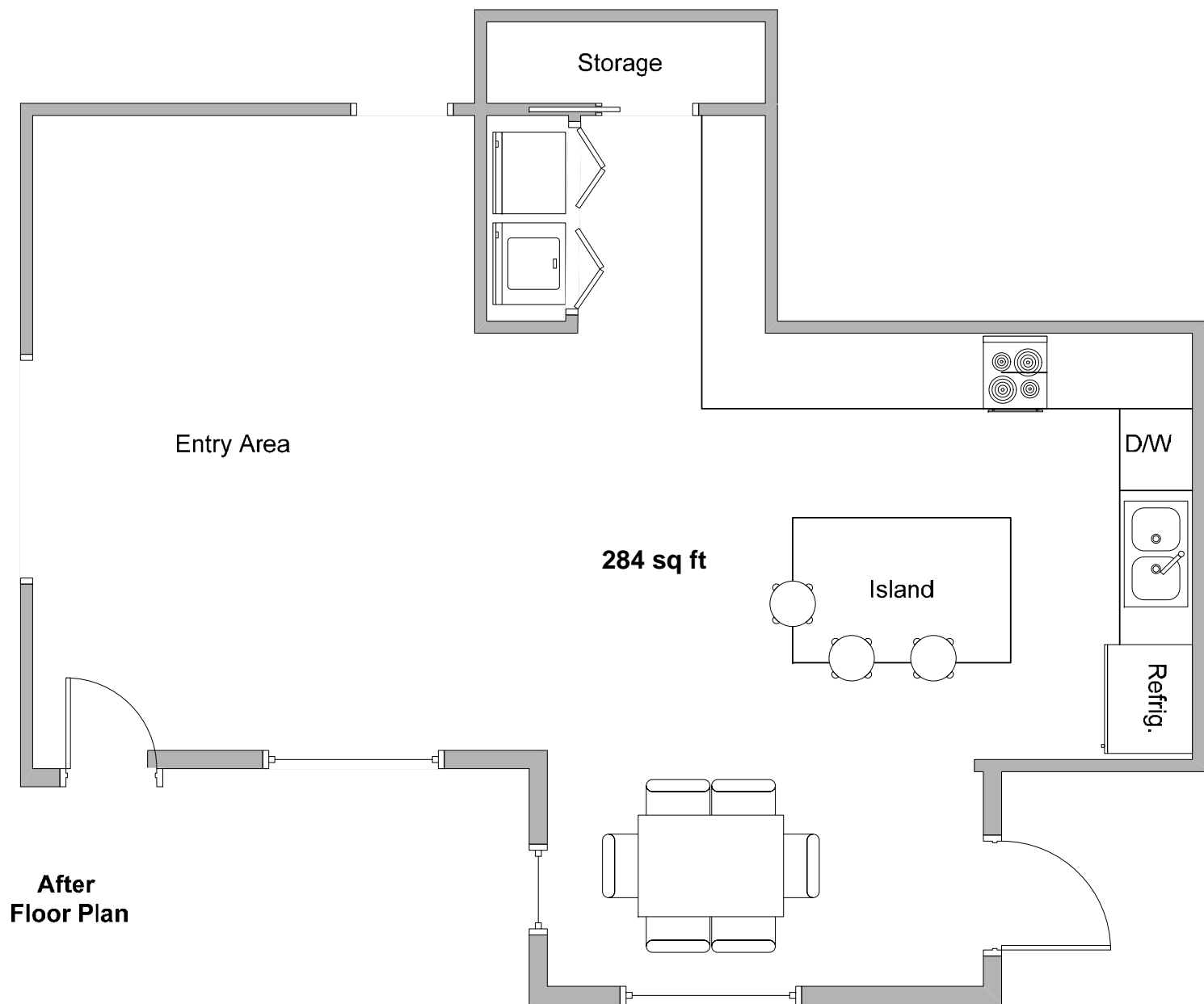


The 62" x 38" island countertop provides plenty of work space for food preparation and adds seating for 3. The existing kitchen window and skylights are now features in the new kitchen being highlighted by the white cabinets against the light green wall color. The colors of the existing stained glass accent window coordinate with the new decorative tile backsplash above the stove.





**Before
Floor Plan**



**After
Floor Plan**